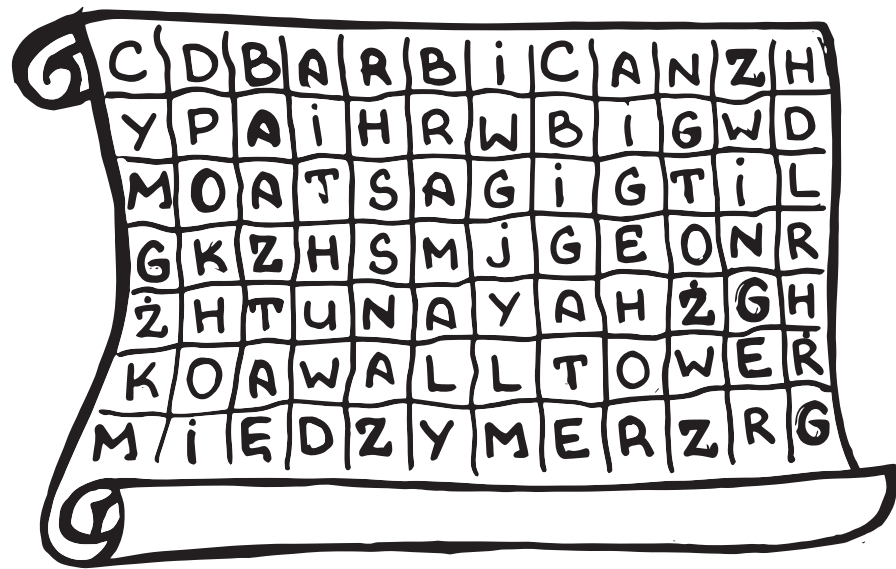
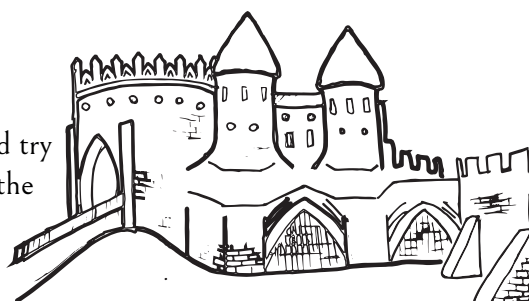


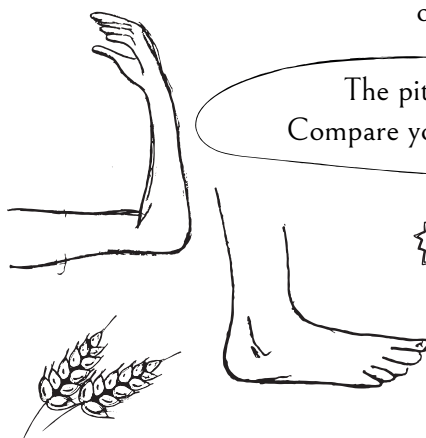
**4**   This task will teach you about various elements that made up medieval city walls. Do you think there could have been a different way of entering the city than through the main gate? Perhaps whoever stole my grain used a secret passage and made off to another town! In the below crossword, find five terms that describe components of town fortifications:



Take a peek at the city walls and try to tell the difference between the original and newer bricks.



**5**   Back in my day, the ell, roughly the length of an adult's forearm, along with the foot, were the main units of measurement. Try to measure, in ells and feet, the depth of the pit next to the city executioner's house – use a rope! Once you do that, you will know how much the street level has raised since the times when I was city councillor. By the way... What if someone hid my wares in the basement of a town house?



The pit is \_\_\_\_ ells and \_\_\_\_ feet deep. Compare your results – are they roughly the same?

Find out what's the name of the street, where the executioner's house is. Using the map find another street with similar name. What is the name of this street?

**3**   After filling in the blanks, you will learn what kind of goods passed through Warsaw, and how they got here. Use the terms listed below:

KAZIMIERZ DOLNY	TRADE	ROUTE	CARGO	TIMBER
GRAIN	PŁOCK	GDAŃSK	POLISH-LITHUANIAN COMMONWEALTH	

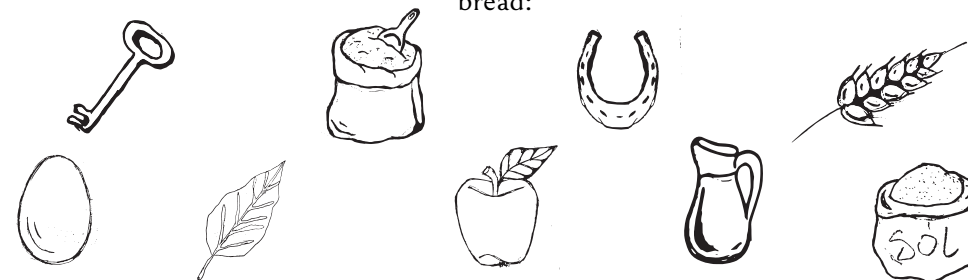
The Vistula river served as the main \_\_\_\_\_ of the former \_\_\_\_\_. It was used to transport \_\_\_\_\_ to the seaport of \_\_\_\_\_. The most common goods carried by merchant ships on the river were \_\_\_\_\_, \_\_\_\_\_ and tar. The lucrative trade stimulated the growth of port cities like Sandomierz, \_\_\_\_\_ and \_\_\_\_\_.

Using yourselves as the medium, create a living picture portraying what a typical day in the port of Warsaw may have looked like. Then, ask an unsuspecting passerby to snap a photo!



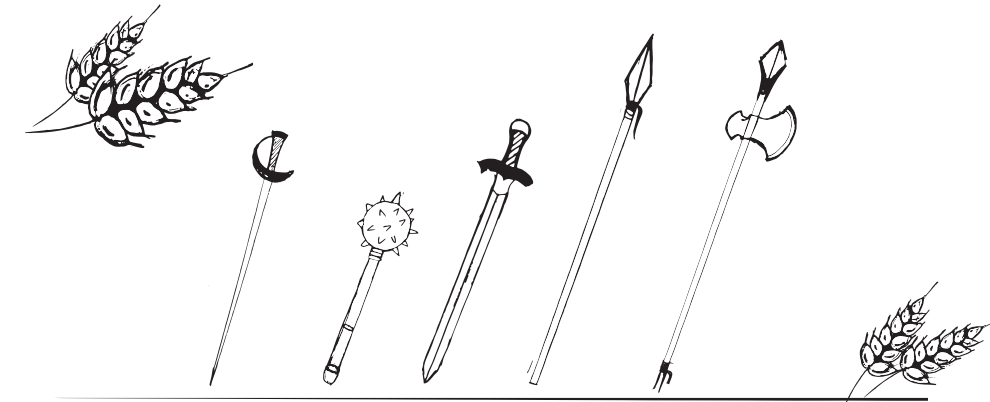
The preparation of bread was a crucial skill in my times. It was a staple food for a majority of the townsfolk. My lost shipment happens to be made up of one of bread's main ingredients. Can you guess what that might be?

Take a look at the pictures and mark the ingredients a baker would need to produce bread:

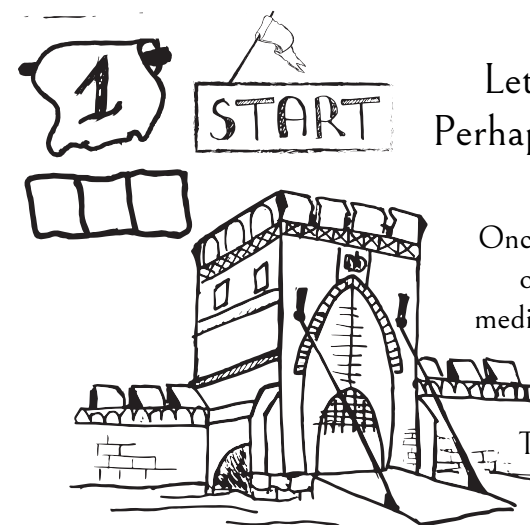


Take a look around the intersection. Try to find a plate built into one of the walls – it will tell you when Piekarska street – Baker street in English – was first built.

**2**   Take a close look at the tombstone of the last Dukes of Masovia. On the picture below, try finding two weapons also present on the memorial – the answer will tell us what the inventory of medieval lords typically looked like. Do you think the people responsible for taking my shipment could have carried such arms?



On your way out, examine the old photograph of the cathedral and compare it to how the building looks today.



Let us start at the city gates. Perhaps we will learn something of use here?

Once you complete this task, you will find out how outsiders gained entry into medieval Warsaw and what kind of control were they subjected to.

Try to connect the words with their definitions:

TOLL

A vertically opened gate, usually made of wood or metal, guarding the entrances to cities and castles

HIGH ROAD

A defensive wall encircling a castle or settlement

COBBLE

A rounded field stone used for paving roads

PORTCULLIS

opłata pobierana za towary wwożone do miast

RAMPART

stara nazwa drogi, która prowadziła do ważnego miejsca

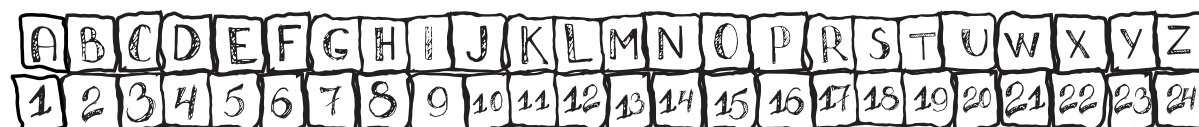
Take a look around the square behind Sigismund's column. Can you find brick lines in the pavement? They mark where the old entrance to the city would have been.



You now know that grain is what we're after. Unfortunately, I have some bad news... the trail goes cold at the main market square! What could possibly have happened to my shipment!?

Find the building whose name you managed to decipher. Here's a clue: look for a town house with a ship on its facade. The one you are after will be its left-hand neighbor!

Connect the dots – what does the drawing depict?



# PODCHODY PO WARSZAWSKU



Hail  
fellow, well met!

I am Jerzy Baryczka, born in the year of our Lord 1500. Though my ancestors hailed from Hungary, I call Warsaw my home, and it is here that I serve as city councillor, own the most handsome town house, and busy myself with trade. Yet I am in peril, for a month has now passed since a shipment of my goods went missing! I intended to lade it upon a barge that makes its stop here, on the route from Cracow to Gdańsk... Yet I am told that the city guards have found some clues! I will need your help, thus I invite you on a journey through Warsaw. At each stop, you will be given three numbers which will bring you closer to my missing shipment!

